

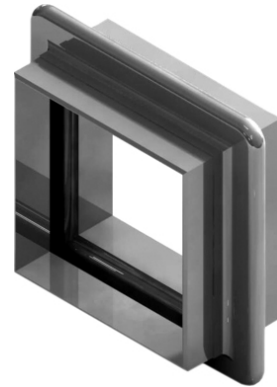
MRU

Rectangular Expansion Joint

Custom model stainless steel rectangular expansion joint composed of single- or multi-ply unrestrained bellow with U-shape corners, for mounting with welding or flanges ends up the pipeline.

Available with optional inner sleeve for bellow's protection and improved stability and/or blocking system. Couplings can be made out of various carbon-steel or stainless steel grades.

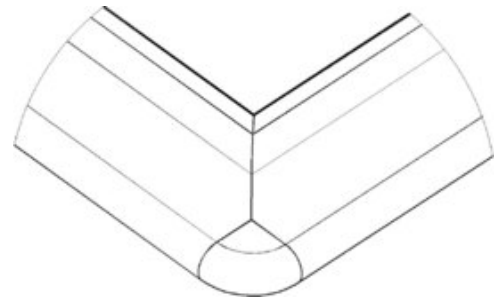
For detailed technical specifications on MRU axial expansion joints please check the following table and documents or [contact us](#).



Note | Type MRU - Rectangular Expansion Joint | 3D view

▶ Features

- ✔ stainless steel bellow
- ✔ rectangular U-shape design
- ✔ universal movements
- ✔ optimal inner sleeve
- ✔ fully customizable item



Note | Type MRU - Rectangular Expansion Joint | corner profile

▶ Technical Specifications

Type	Rectangular Stainless Steel
Series	MRU
Couplings	*
Size/Range	*
Pressure	*
Axial	yes
Lateral	yes
Angular	yes

* by individual request

** Pressure thrust restraint can be achieved with blocking bars / acc. to individual request