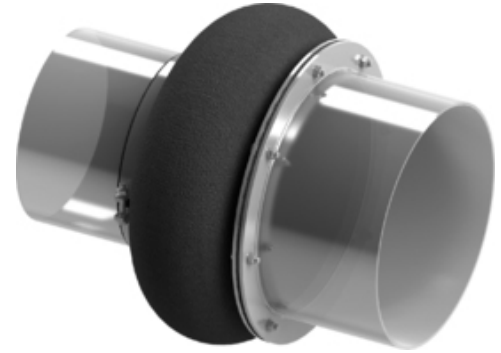


## Type 53 Fabric Expansion Joint

Standard model tubular fabric expansion joint composed of single- or multi-layer fabric with preformed convolution, available in cylindrical or rectangular shape for mounting with mixed couplings.

Preformed convolution allows connecting identical and non-identical cross-sections by flange and clamp couplings.

For detailed technical specifications on Type 53 fabric expansion joints please check the following table and documents or [contact us](#).

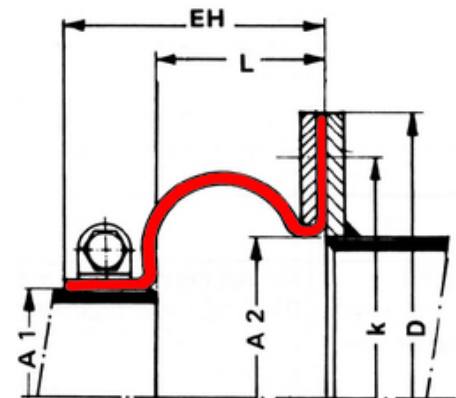


Note | Type 53 - Fabric Expansion Joint | 3D view

### ► Features

- ✔ compensate universal movements and vibrations
- ✔ mixed couplings installment
- ✔ preformed convolution
- ✔ identical and different cross-sections
- ✔ minimal reactional forces

### ► Technical Specifications



Note | Type 53 - Fabric Expansion Joint | dimensional sketch

Type	Fabric
Series	W 53
Couplings	clamp/flange
Size/Range	by request *
Pressure	up to 500 mbars **
Axial	up to 60% of L
Lateral	up to 25% of L
Angular	acc. to designsheet

\* limited by manufacturing technology

\*\* special constructions for higher pressure may be possible