

Type 33 Fabric Expansion Joint

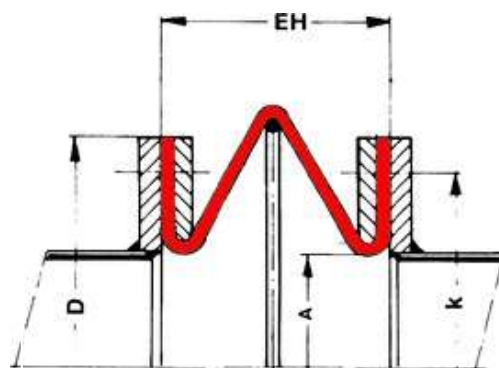
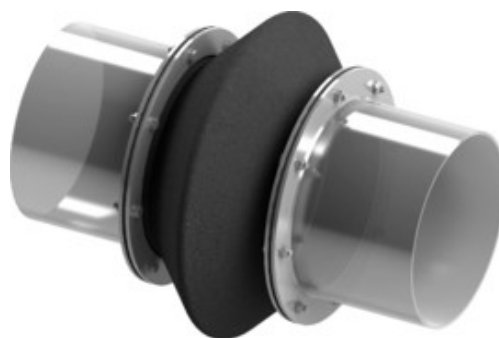
Standard model bellow fabric expansion joint composed of single- or multi-layer fabric with preformed convolution, available in cylindrical or rectangular shape for mounting with flanges on the pipeline.

Preformed convolution bellow is used to achieve large expansion compensation with or without internal and external pressure. Inner stainless steel rings are used for structure stability and/or as an anchoring point.

Detailed technical specifications can be found in the following table or contact us.

► Features

- ✓ compensate large movements and vibrations
- ✓ simple installment with flanges
- ✓ U-design construction
- ✓ preformed bellow structure
- ✓ anchoring points may be required



► Technical Specifications

Series	W33
Type	Fabric
Size / Range	by request *
Connection	flanges
Pressure	up to 500 mbar **
Axial	up to 70% of L
Lateral	up to 25% of L
Angular	by request *

* limited by manufacturing technology

** special constructions for higher pressure may be possible