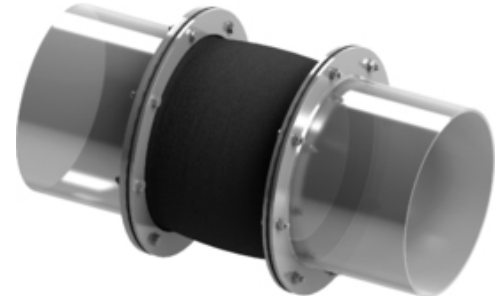


Type 31 (with baffle plate) Fabric Expansion Joint

Standard model U-design fabric expansion joint composed of single- or multi-layer fabric, available in cylindrical or rectangular shape for mounting with flanges on the pipeline.

U-design fabric expansion joints are commonly used due to simple installation and various customization of the connecting flanges. Baffle plate is mandatory for high temperatures and/or granular media.

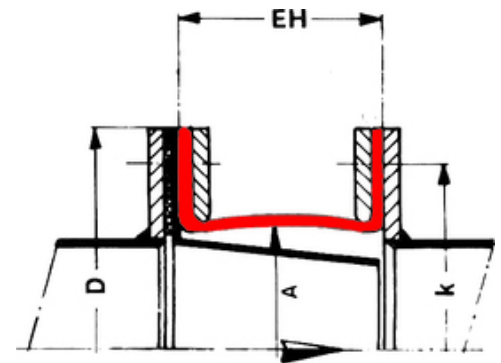
For detailed technical specifications on Type 31 fabric expansion joints please check the following table and documents or [contact us](#).



Note | Type 31 (with baffle plate) - Fabric Expansion Joint | 3D view

► Features

- ✔ compensate universal movements and vibrations
- ✔ simple installment with flanges
- ✔ U-design construction
- ✔ inner sleeve included
- ✔ low reactional forces



Note | Type 31 (with baffle plate) - Fabric Expansion Joint | dimensional sketch

► Technical Specifications

Type	Fabric
Series	W 31-B
Couplings	flanges
Size/Range	by request *
Pressure	up to 500 mbars **
Axial	up to 30% of EH
Lateral	up to 20% of Eh
Angular	acc. to designsheet

* limited by manufacturing technology

** special constructions for higher pressure may be possible