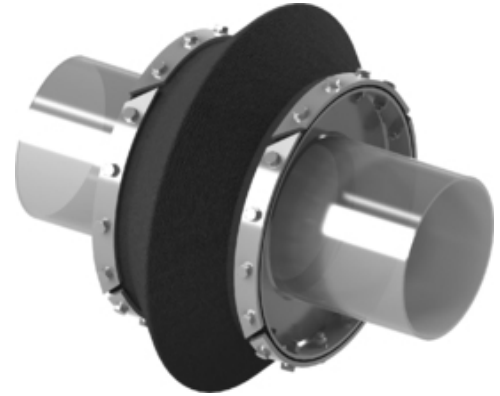


Type 23 Fabric Expansion Joint

Standard model bellow fabric expansion joint composed of single- or multi-layer fabric with preformed convolution, available in cylindrical or rectangular shape for mounting on angled flanges up the pipeline.

Designed for high temperatures this fabric expansion joint is normally used with an internal baffle plate incorporated insulation. Preformed convolution bellow is used to achieve large expansion compensation. Inner stainless steel rings are used for structure stability and/or as an anchoring point.

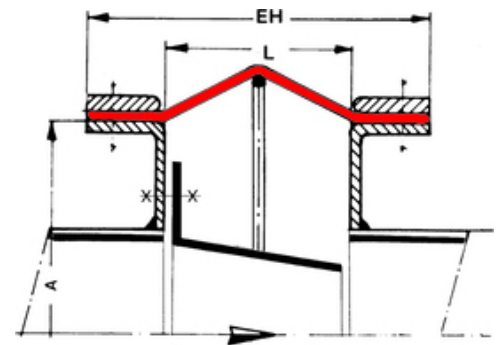
For detailed technical specifications on Type 23 fabric expansion joints please check the following table and documents or [contact us](#).



Note | Type 23 - Fabric Expansion Joint | 3D view

► Features

- ✔ compensate large movements and vibrations
- ✔ installment on extended angle flange
- ✔ high temperature bellow design
- ✔ inner sleeve is recommended
- ✔ anchoring points may be required



Note | Type 23 - Fabric Expansion Joint | dimensional sketch

► Technical Specifications

Type	Fabric
Series	W 23
Couplings	angled flanges
Size/Range	by request *
Pressure	up to 500 mbars **
Axial	up to 70% of L
Lateral	up to 25% of L
Angular	acc. to designsheet

* limited by manufacturing technology

** special constructions for higher pressure may be possible