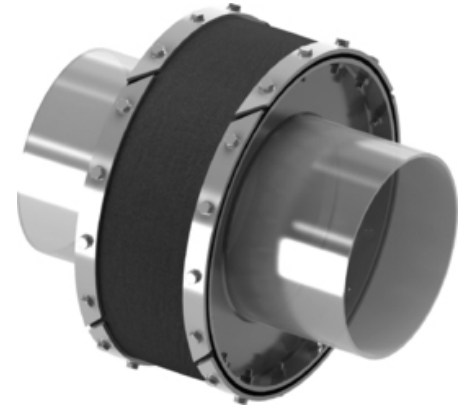


# Type 21 Fabric Expansion Joint

Standard model tubular fabric expansion joint composed of single- or multi-layer fabric, available in cylindrical or rectangular shape for mounting on angled flanges up the pipeline.

Designed for high temperatures this fabric expansion joint is normally used with an internal baffle plate (sleeve) and an insulation pillow.

For detailed technical specifications on Type 21 fabric expansion joints please check the following table and documents or [contact us](#).

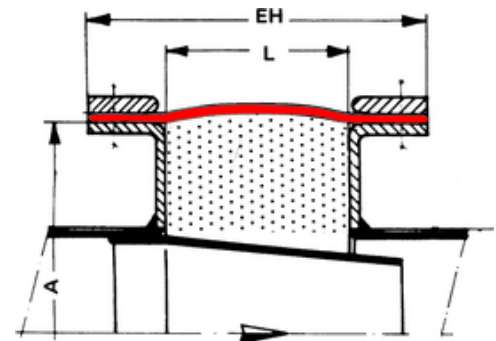


Note | Type 21 - Fabric Expansion Joint | 3D view

## Features

- ✔ compensate universal movements and vibrations
- ✔ installment on extended angle flange
- ✔ high temperature design
- ✔ inner sleeve (baffle plate)
- ✔ insulation pillow

## Technical Specifications



Note | Type 21 - Fabric Expansion Joint | dimensional sketch

Type	Fabric
Series	W 21
Couplings	angled flanges
Size/Range	by request *
Pressure	up to 500 mbars **
Axial	up to 30% of L
Lateral	up to 20% of L
Angular	acc. to designsheet

\* limited by manufacturing technology

\*\* special constructions for higher pressure may be possible