

Type 12 Fabric Expansion Joint

Standard model tubular fabric expansion joint composed of single- or multi-layer fabric with preformed convolution, available in cylindrical or rectangular shape for mounting with clamps directly on the pipeline.

Correct dimensioning and temperature-based material selection are vital for proper functionality of fabric expansion joints.

For detailed technical specifications on Type 12 fabric expansion joints please check the following table and documents or [contact us](#).

► Features

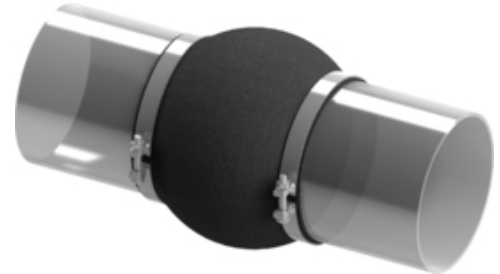
- ✔ compensate universal movements and vibrations
- ✔ preformed convolution for extreme compensation
- ✔ easy and quick installment with clamps
- ✔ low pressure systems
- ✔ low reactional forces

► Technical Specifications

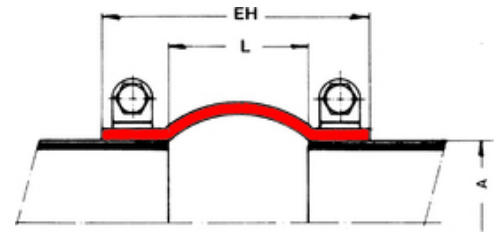
Type	Fabric
Series	W 12
Couplings	clamps
Size/Range	by request *
Pressure	up to 500 mbars **
Axial	up to 50% of L
Lateral	up to 20% of L
Angular	acc. to designsheet

* limited by manufacturing technology

** special constructions for higher pressure may be possible



Note | Type 12 - Fabric Expansion Joint | 3D view



Note | Type 12 - Fabric Expansion Joint | dimensional sketch