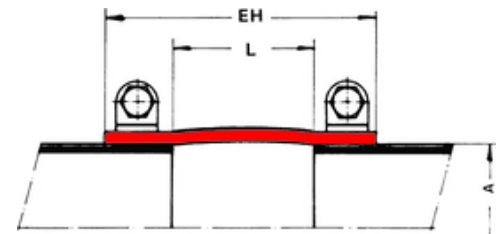
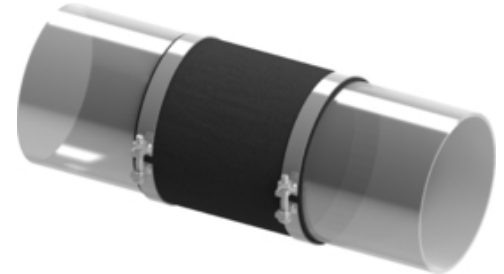


Type 11 Fabric Expansion Joint

Standard model tubular fabric expansion joint composed of single- or multi-layer fabric, available in cylindrical or rectangular shape for mounting with clamps directly on the pipeline.

Correct dimensioning and temperature-based material selection are vital for proper functionality of fabric expansion joints.

For detailed technical specifications on Type 11 fabric expansion joints please check the following table and documents or [contact us](#).



► Features

- ✔ universal movement compensation
- ✔ easy installment by cuffs/clamps
- ✔ low pressure systems (exhaust & ventilation)
- ✔ minimal reactional forces

► Technical Specifications

Type	Fabric
Series	W 11
Size/Range	by request *
Couplings	clamps
Pressure	up to 500 mbars **
Axial	up to 30% of L
Lateral	up to 20% of L
Angular	acc. to designsheet

* limited by manufacturing technology

** special constructions for higher pressure may be possible