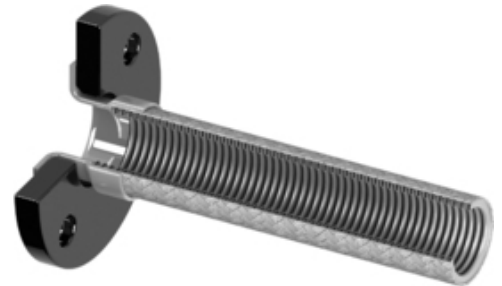


## SE111 Single Braided Corrugated Hose

Standard model stainless steel corrugated hose single braided (1-layer) for pressured applications.





Available with various standard and non-standard couplings at any length required. Couplings are available in carbon steel, stainless steel, brass or cast iron.

For detailed technical specifications on SE111 single braided stainless steel corrugated hoses please check the following table and documents or [contact us](#).



Note | type-SE111-stainless-steel-corrugated-hose

### Features

-  stainless steel flexible hose
-  corrugated single braided construction
-  various couplings available
-  fully customizable item

## ▶ Technical Specifications

DN [mm]   [inch]		Pressure **				Static Bend Radius [mm]	Dynamic Bend Radius [mm]	Approx. Weight [g/m]
		Nominal (PN) [bar]	Braid Fracture [bar]	Service at Triple Protection [bar]	Service at Quadruple Protection [bar]			
6	1/4"	150	600	200	150	25	100	155
8	1/4"	100	528	176	132	25	120	215
10	3/8"	100	400	133	100	35	130	280
12	1/2"	65	280	93	70	45	160	330
15	5/8"	65	256	85	64	50	180	360
20	3/4"	40	172	57	43	70	200	540
25	1"	40	196	65	49	80	220	800
32	1 1/4"	25	140	46	35	100	270	1000
40	1 1/2"	25	152	50	38	130	300	1250
50	2"	25	104	34	26	155	350	1650
65	2 1/2"	20	96	32	24	200	410	2380
80	3"	16	72	24	18	220	450	2600
100	4"	16	64	21	16	270	560	3450
125	5"	10	48	16	12	-	660	5800
150	6"	10	40	13	10	-	815	8200
200	8"	6	32	10	8	-	1015	11500
250	10"	6	24	8	6	-	1200	17250

\* other sizes available on individual request

\*\* for higher working pressure please check our double braided (SE112) corrugated stainless steel hoses

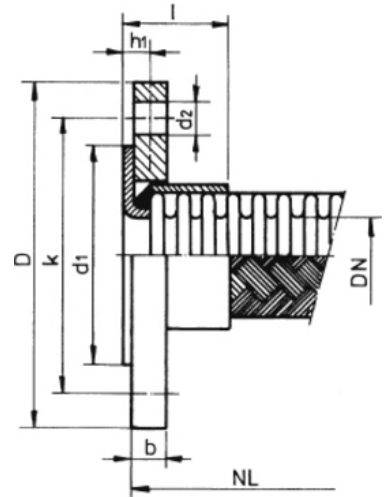
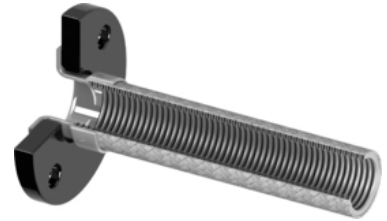
## ▶ Couplings Types

### ▶ Flanged Couplings

#### ▶ Coupling AE201

Collar and swivel flange assembly for stainless steel corrugated hose type SE110.

Available in carbon steel and stainless steel. Flanges according to DIN , ANSI , other known standards or custom design.



DN [mm]	l [mm]	h1 [mm]
10	29	9
15	29	9
20	32	12
25	40	20
32	40	20
40	40	20
50	40	20
65	40	20
80	50	25
100	50	25
125	60	30
150	70	30

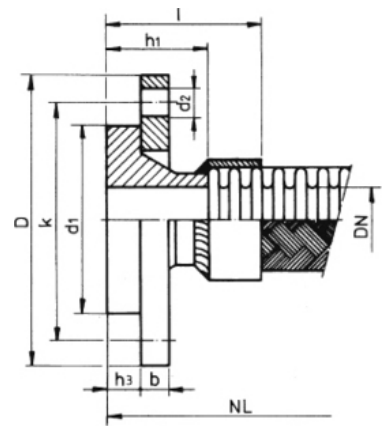
\* Acc. to DIN EN 1092 type 02 + 33 in PN10

\*\* for other DN and D, k, d1, d2, b measurements please check Standard's Page or Catalog Appendix.

► Coupling AE202

Weld-on shoulder and floating flange coupling assembly for stainless steel corrugated hose type SE110.

Available in carbon steel and stainless steel. Flanges according to DIN , ANSI , other known standards or custom design.



DN [mm]	l [mm]	h1 [mm]	h3 [mm]
10	55	35	12
15	55	38	12
20	60	40	14
25	60	40	14
32	60	42	14
40	60	45	14
50	65	45	16
65	65	45	16
80	75	50	16
100	75	52	18
125	80	55	18
150	90	55	20

\* Acc. to DIN EN 1092 type 04 + 34 in PN10-PN16

\*\* for other DN and D, k, d1, d2, b measurements please check Standard's Page or Catalog Appendix.

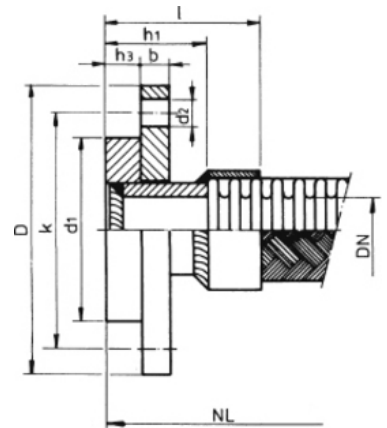
► Coupling AE203

Collar sockets and swivel flange assembly for stainless steel corrugated hose type SE110.

Available in carbon steel and stainless steel. Flanges according to DIN , ANSI , other known standards or custom design.



DN [mm]	l [mm]	h1 [mm]	h3 [mm]
10	75	55	12
15	75	55	12
20	80	60	14
25	85	65	14
32	90	70	14
40	95	75	14
50	95	75	16
65	100	80	16
80	110	85	16
100	115	90	16
125	120	90	18
150	135	95	20



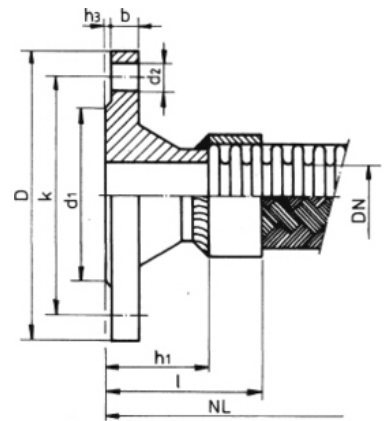
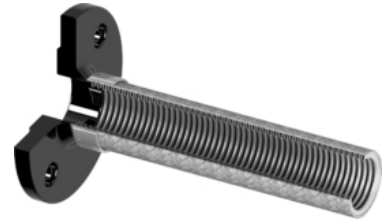
\* Acc. to DIN EN 1092 type 02 + 32 in PN10-PN16

\*\* for other DN and D, k, d1, d2, b measurements please check Standard's Page or Catalog Appendix.

► Coupling AE204

Weld-on (fixed) flange coupling assembly for stainless steel corrugated hose type SE110.

Available in carbon steel and stainless steel. Flanges according to DIN , ANSI , other known standards or custom design.



DN [mm]	l [mm]	h1 [mm]
10	55	35
15	55	38
20	58	40
25	58	40
32	60	42
40	62	45
50	65	45
65	65	45
80	75	50
100	77	52
125	85	55
150	95	55

\* Acc. to DIN EN 1092 type 11 in PN10-PN16

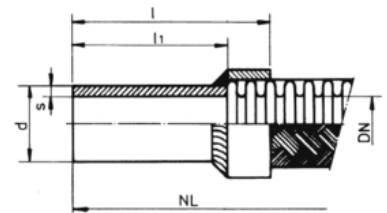
\*\* for other DN and D, k, d1, d2, b measurements please check Standard's Page or Catalog Appendix.

## ► Pipe / Welding-ends Couplings

### ► Coupling AE301

Welding-end coupling assembly for stainless steel corrugated hose type SE110.

Available in carbon steel and stainless steel. Sizes acc. to standards or mechanized to custom specifications.



DN [mm]	d [mm]	s [mm]	l [mm]	l1 [mm]
6	8	1	70	50
10	13.5	1.8 *	70	50
12	17.2	1.8 *	70	50
15	21.3	2	70	50
20	26.9	2.6	75	55
25	33.7	2.6	80	60
32	42.4	2.6	85	65
40	48.3	2.6	90	70
50	60.3	2.9	90	70
65	76.1	2.9	95	75
80	88.9	3.2	105	80
100	114.3	3.6	110	85
125	139.7	4	115	85
150	168.3	4,5 **	130	90
200	219.1	6.3 **	140	100
250	273.0	6.3 **	140	100
300	323.9	7,1 **	140	100

\* 1.6mm for stainless steel

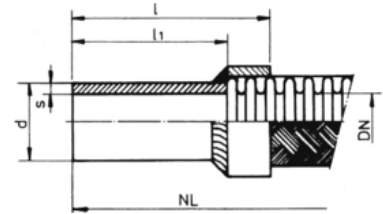
\*\* 4.0mm for stainless steel

\*\*\* other pipe diameters, thickness or length on request

► Coupling AE302

Tubular fitting for pipe coupling with cutting and locking ring assembly for SE110 hose.

Available in carbon steel and stainless steel. Sizes acc. to standards or mechanized to custom specifications.



DN [mm]	d [mm]	s [mm]	l [mm]	l1 [mm]
6	8	1	48	28
8	10	1	50	30
10	12	1.5	50	30
12	15	1.5	52	32
15	18	1.5	52	32
20	22	1.5	56	36
25	28	1.5	60	40
32	35	2	65	45
40	42	2	65	45

\* other pipe diameters, thickness or length on request

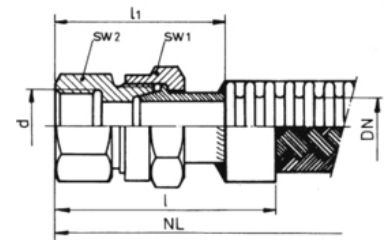


## ► Cone Seal Threaded Couplings

### ► Coupling AE401

Internal thread with 24 degree cone seal assembly for stainless steel corrugated hose type SE110.

Available in carbon steel and stainless steel. Sizes acc. to standards or mechanized to custom specifications.



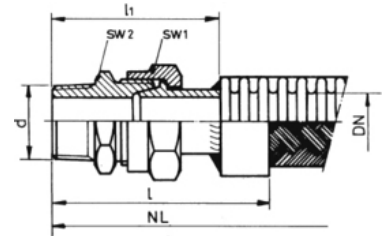
DN [mm]	d DIN2999	l [mm]	l1 [mm]	SW1 [mm]	SW2 [mm]
6	1/4"	65	45	19	19
10	3/8"	68	48	22	22
12	1/2"	75	32	27	32
15	1/2"	75	55	32	27
20	3/4"	82	62	36	32
25	1"	87	67	41	41
32	1 1/4"	93	73	50	46
40	1 1/2"	97	77	60	55
50	2"	105	85	70	65

\* other thread connection, i.e. metric, NPT, cylindrical available on request

► Coupling AE403

External thread with 24 degree cone seal assembly for stainless steel corrugated hose type SE110.

Available in carbon steel and stainless steel. Sizes acc. to standards or mechanized to custom specifications.



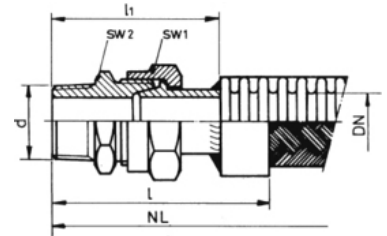
DN [mm]	d DIN2999	l [mm]	l1 [mm]	SW1 [mm]	SW2 [mm]
6	1/4"	70	50	19	17
10	3/8"	73	53	22	19
12	1/2"	82	62	32	27
15	1/2"	82	62	32	27
20	3/4"	90	70	36	32
25	1"	95	75	41	41
32	1 1/4"	101	81	50	46
40	1 1/2"	107	87	60	55
50	2"	113	93	70	65

\* other thread connection, i.e. metric, NPT, cylindrical available on request

► Coupling AE404

Welding-end with 24 degree cone seal assembly for stainless steel corrugated hose type SE110.

Available in carbon steel and stainless steel. Sizes acc. to standards or mechanized to custom specifications.



DN [mm]	d x s [mm]	l [mm]	l1 [mm]	SW1 [mm]	SW2 [mm]
6	8x1	70	50	19	17
10	13.5x1.8*	73	53	22	19
12	17.2x1.8*	82	62	32	27
15	21.3x2	82	62	32	27
20	26.9x2.6	90	70	36	32
25	33.7x2.6	95	75	41	41
32	42.4x2.6	101	81	50	46
40	48.3x2.6	107	87	60	55
50	60.3x2.9	113	93	70	65

\* 1.6mm for stainless steel

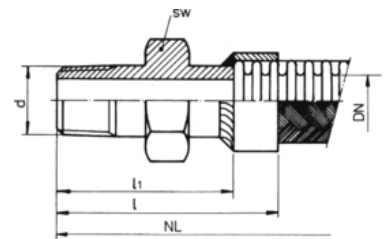
\*\* other lengths available on request

## ▶ Hex Nipple / Socket

### ▶ Coupling AE405

Hexagon nipple and tapered external thread assembly for stainless steel corrugated hose type SE110.

Available in carbon steel and stainless steel. Sizes acc. to standards or mechanized to custom specifications.



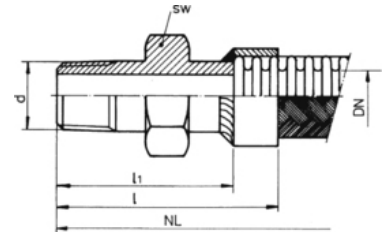
DN [mm]	d DIN2999	l [mm]	l1 [mm]	SW [mm]
6	1/4"	45	25	17
10	3/8"	48	28	19
12	1/2"	51	31	22
15	1/2"	51	31	22
20	3/4"	52	32	27
25	1"	60	40	36
32	1 1/4"	63	43	46
40	1 1/2"	66	46	50
50	2"	70	50	60
65	2 1/2"	80	60	80
80	3"	100	75	95

\* for complete thread specifications please check our Standard's Page of Catalog Appendix

► Coupling AE406

Hexagon nipple and cylindrical external thread assembly for stainless steel corrugated hose type SE110.

Available in carbon steel and stainless steel. Sizes acc. to standards or mechanized to custom specifications.



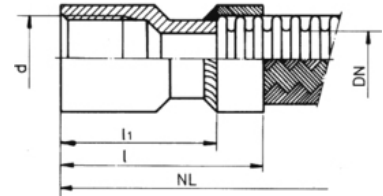
DN [mm]	d ISO228	l [mm]	l1 [mm]	SW [mm]
6	1/4"	45	25	17
10	3/8"	48	28	19
12	1/2"	51	31	22
15	1/2"	51	31	22
20	3/4"	52	32	27
25	1"	60	40	36
32	1 1/4"	63	43	46
40	1 1/2"	66	46	50
50	2"	70	50	60
65	2 1/2"	80	60	80
80	3"	100	75	95

\* for complete thread specifications please check our Standard's Page of Catalog Apppendix

► Coupling AE408

Socket with internal thread assembly for stainless steel corrugated hose type SE110.

Available in carbon steel and stainless steel. Sizes acc. to standards or mechanized to custom specifications.



DN [mm]	d DIN2999	l [mm]	l1 [mm]
6	1/4"	45	25
10	3/8"	46	26
12	1/2"	54	34
15	1/2"	54	34
20	3/4"	56	36
25	1"	63	43
32	1 1/4"	68	48
40	1 1/2"	68	48
50	2"	76	56
65	2 1/2"	85	65
80	3"	96	71

\* for complete thread specifications please check our Standard's Page of Catalog Appendix

## ► Holander Assembly

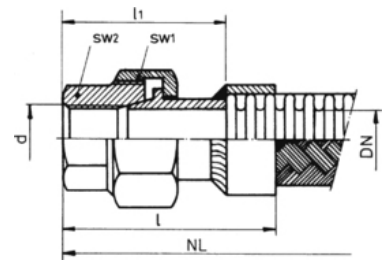
### ► Coupling AE501

Internal thread with cone seal assembly for stainless steel corrugated hose type SE110.

Available in malleable cast iron, carbon steel and stainless steel. Sizes acc. to standards or mechanized to custom specifications.



DN [mm]	d DIN2999	l [mm]	l1 [mm]	SW1 [mm]	SW2 [mm]
6	1/4"	65	45	28	18
10	3/8"	67	47	32	22
12	1/2"	74	54	39	26
15	1/2"	74	54	39	26
20	3/4"	79	59	48	31
25	1"	84	64	54	38
32	1 1/4"	87	67	67	48
40	1 1/2"	91	71	73	54
50	2"	102	82	90	66



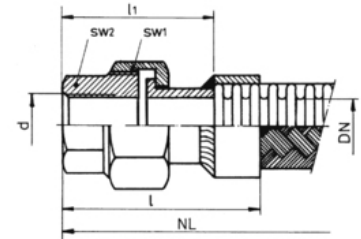
\* other thread connection, i.e. metric, NPT, cylindrical available on request

\*\* for complete thread specifications please check our Standard's Page of Catalog Appendix

► Coupling AE502

Internal thread with flat seal assembly for stainless steel corrugated hose type SE110.

Available in malleable cast iron, carbon steel and stainless steel. Sizes acc. to standards or mechanized to custom specifications.



DN [mm]	d DIN2999	l [mm]	l1 [mm]	SW1 [mm]	SW2 [mm]
6	1/4"	65	45	28	18
10	3/8"	67	47	32	22
12	1/2"	74	54	39	26
15	1/2"	74	54	39	26
20	3/4"	79	59	48	31
25	1"	84	64	54	38
32	1 1/4"	87	67	67	48
40	1 1/2"	91	71	73	54
50	2"	102	82	90	66

\* other thread connection, i.e. metric, NPT, cylindrical available on request

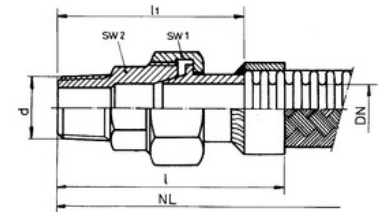
\*\* for complete thread specifications please check our Standard's Page of Catalog Appendix



► Coupling AE503

External thread with cone seal assembly for stainless steel corrugated hose type SE110.

Available in malleable cast iron, carbon steel and stainless steel. Sizes acc. to standards or mechanized to custom specifications.



DN [mm]	d DIN2999	l [mm]	l1 [mm]	SW1 [mm]	SW2 [mm]
6	1/4"	78	58	28	18
10	3/8"	83	63	32	22
12	1/2"	93	73	39	26
15	1/2"	93	73	39	26
20	3/4"	101	81	48	31
25	1"	107	87	54	38
32	1 1/4"	111	91	67	48
40	1 1/2"	117	97	73	54
50	2"	131	111	90	66

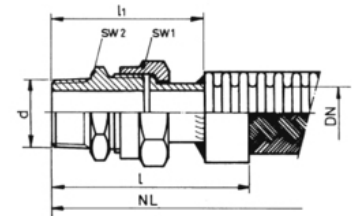
\* other thread connection, i.e. metric, NPT, cylindrical available on request

\*\* for complete thread specifications please check our Standard's Page of Catalog Appendix

► Coupling AE504

External thread with flat seal assembly for stainless steel corrugated hose type SE110.

Available in malleable cast iron, carbon steel and stainless steel. Sizes acc. to standards or mechanized to custom specifications.



DN [mm]	d DIN2999	l [mm]	l1 [mm]	SW1 [mm]	SW2 [mm]
6	1/4"	78	58	28	18
10	3/8"	83	63	32	22
12	1/2"	93	73	39	26
15	1/2"	93	73	39	26
20	3/4"	101	81	48	31
25	1"	107	87	54	38
32	1 1/4"	111	91	67	48
40	1 1/2"	117	97	73	54
50	2"	131	111	90	66

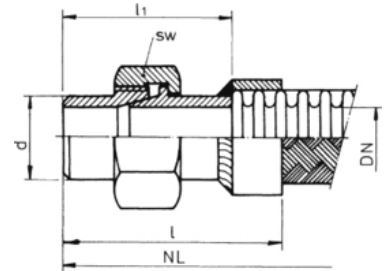
\* other thread connection, i.e. metric, NPT, cylindrical available on request

\*\* for complete thread specifications please check our Standard's Page of Catalog Appendix

## ► Coupling AE505

Pipe / Weld-end coupling with cone seal assembly for stainless steel corrugated hose type SE110.

Available in carbon steel and stainless steel. Sizes acc. to standards or mechanized to custom specifications.



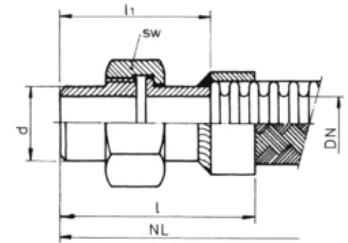
DN [mm]	d [mm]	l [mm]	l1 [mm]	SW [mm]
10	13.5	62	42	27
12	17.2	65	45	27
15	21.3	74	54	32
20	26.9	80	60	41
25	33.7	87	67	50
32	42.4	95	75	60
40	48.3	101	81	70
50	60.3	114	94	85
65	76.1	122	102	100
80	88.9	132	107	120

\* other pipe sizes and lengths available on request

► Coupling AE506

Pipe / Weld-end coupling with flat seal assembly for stainless steel corrugated hose type SE110.

Available in carbon steel and stainless steel. Sizes acc. to standards or mechanized to custom specifications.



DN [mm]	d [mm]	l [mm]	l1 [mm]	SW [mm]
10	13.5	62	42	27
12	17.2	65	45	27
15	21.3	74	54	32
20	26.9	80	60	41
25	33.7	87	67	50
32	42.4	95	75	60
40	48.3	101	81	70
50	60.3	114	94	85
65	76.1	122	102	100
80	88.9	132	107	120

\* other pipe sizes and lengths available on request

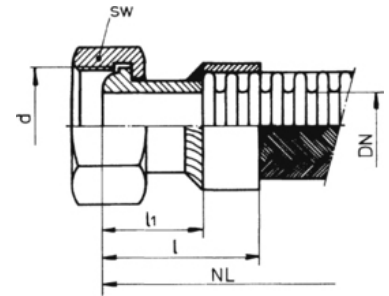
► Coupling AE507

Swivel nut with internal thread and spherical seal assembly for stainless steel corrugated hose type SE110.

Available in carbon steel and stainless steel. Sizes acc. to standards or mechanized to custom specifications.



DN [mm]	DIN2999		ISO228		l [mm]	l1 [mm]
	d	SW	d	SW		
6	1/4"	17	14x1.5	17	44	24
8	3/8"	20	16x1.5	19	44	24
10	1/2"	24	18x1.5	22	45	25
12	5/8"	27	22x1.5	27	48	28
15	3/4"	32	26x1.5	32	49	29
20	1"	41	30x2	36	50	30
25	1 1/4"	50	36x2	41	55	35
32	1 1/2"	55	45x2	50	55	35
40	2"	65	52x2	60	55	35
50	2 1/2"	75	-	-	65	45



\* other thread connection, i.e. metric, NPT, cylindrical available on request

\*\* for complete thread specifications please check our Standard's Page of Catalog Appendix

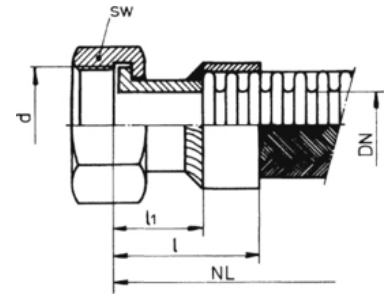
► Coupling AE508

Swivel nut with internal thread and flat seal assembly for stainless steel corrugated hose type SE110.

Available in carbon steel and stainless steel. Sizes acc. to standards or mechanized to custom specifications.



DN [mm]	DIN2999		ISO228		l [mm]	l1 [mm]
	d	SW	d	SW		
6	1/4"	17	14x1.5	17	44	24
8	3/8"	20	16x1.5	19	44	24
10	1/2"	24	18x1.5	22	45	25
12	5/8"	27	22x1.5	27	48	28
15	3/4"	32	26x1.5	32	49	29
20	1"	41	30x2	36	50	30
25	1 1/4"	50	36x2	41	55	35
32	1 1/2"	55	45x2	50	55	35
40	2"	65	52x2	60	55	35
50	2 1/2"	75	-	-	65	45



\* other thread connection, i.e. metric, NPT, cylindrical available on request

\*\* for complete thread specifications please check our Standard's Page of Catalog Appendix